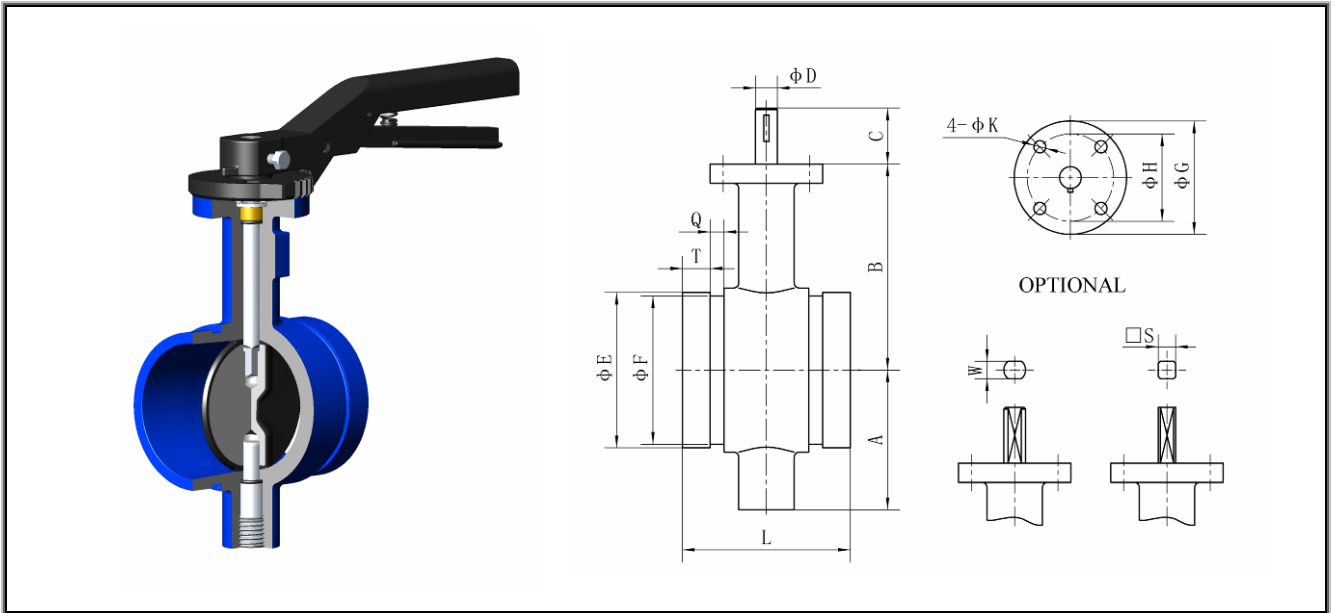


RESILIENT SEATED BUTTERFLY VALVE

Shouldered Butterfly Valve



- ✧ Valves designed to comply with MSS SP-67;
- ✧ Face to face conform to MSS SP-67;
- ✧ Grooves conform to AWWA C606 TABLE 4;

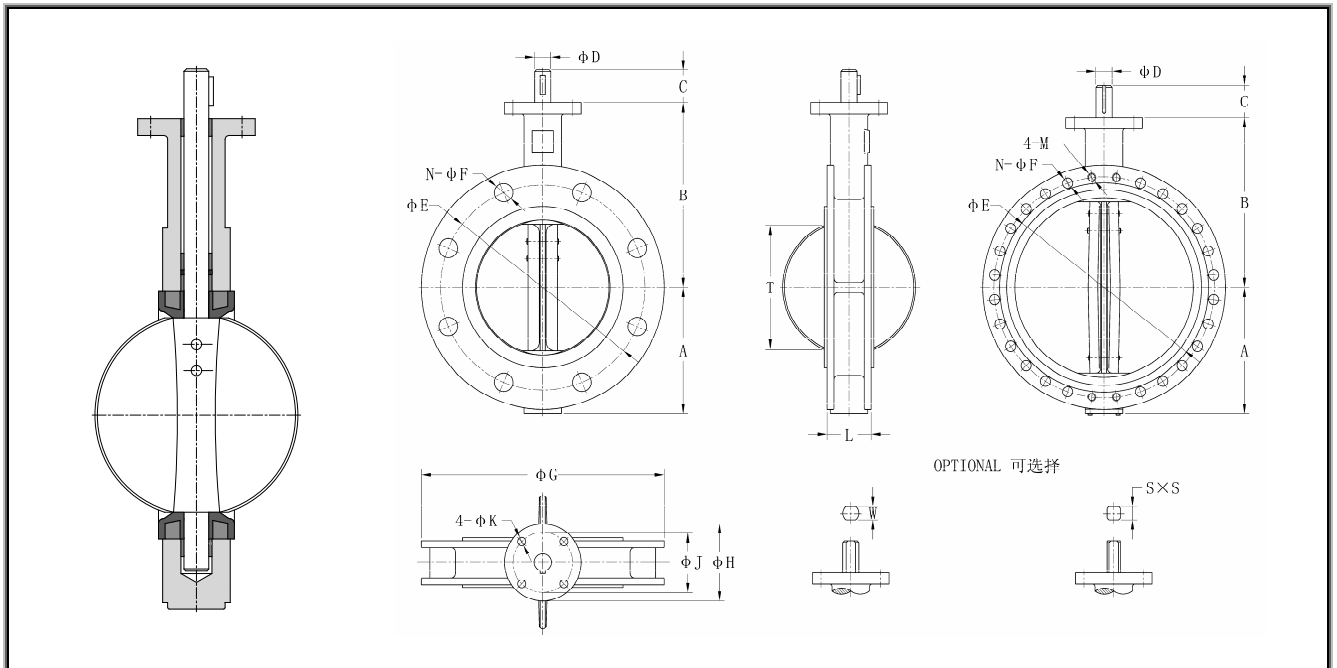
Part Name	Materials
Lever	Malleable Cast Iron / Carbon steel
Body	Ductile Iron
Disc	Ductile Iron +Rubber (EPDM or NBR)
Stem	SS 410
Bushing	PTFE
O-Ring	NBR or EPDM

Dimensions List (mm)

Size		A	B	C	D	E	F	Q	T	L	G	H	K	S	W
inch	mm														
2	50	65	102	32	12.7	60.5	57	8	16	81	65	50	7	10	10
2½	65	72	112	32	12.7	73	69	8	16	97	65	50	7	10	10
3	80	80	118	32	12.7	89	85	8	16	97	65	50	7	10	10
4	100	100	137	32	15.9	114.5	110	9.5	16	116	90	70	9.5	14	12
5	125	118	149	32	19.1	141.5	137	9.5	16	148	90	70	9.5	17	14
6	150	140	170	32	19.1	168.5	164	9.5	16	148	90	70	9.5	17	14
8	200	175	204	38	22.2	219	214.5	11.5	19	134	125	102	11.5	17	17
10	250	215	250	38	28.6	273	268.5	13	19	159	125	102	11.5	22	22
12	300	258	275	38	31.8	324	318.5	13	19	165	125	102	11.5	22	24

RESILIENT SEATED BUTTERFLY VALVE

U-Section Wafer Type Butterfly Valve



Dimensions List (mm)

规格 Size		A	B	C	D	E			N-F/(4-M)			G			H	J	I-K	L	T	S	W
mm	inch					ANSI 125/150	PN10	PN16	ANSI 125/150	PN10	PN16	ANSI 125/150	PN10	PN16							
40	1½	70	145	32	12.7	98.4	110	110	4-16	4-18	4-18	127	150	150	65	50	4-7	33	27	9	10
50	2	76	162	32	12.7	120.7	125	125	4-19	4-18	4-18	152	165	165	65	50	4-7	42	32	9	10
65	2½	80	174	32	12.7	139.7	145	145	4-19	4-18	4-18	178	185	185	65	50	4-7	45	47	9	10
80	3	90	181	32	12.7	152.4	160	160	4-19	4-18	8-18	191	200	200	65	50	4-7	45	65	9	10
100	4	110	200	32	15.9	190.5	180	180	8-19	8-18	8-18	229	220	220	90	70	4-9.5	52	90	11	12
125	5	125	213	32	19.1	215.9	210	210	8-22	8-18	8-18	254	250	250	90	70	4-9.5	54	111	14	14
150	6	143	225	32	19.1	241.3	240	240	8-22	8-22	8-22	279	285	285	90	70	4-9.5	56	145	14	14
200	8	175	260	38	22.2	298.5	295	295	8-22	8-22	12-22	343	340	340	125	102	4-11.5	60	193	17	17
250	10	203	292	38	28.6	362	350	355	12-25	12-22	12-26	406	395	405	125	102	4-11.5	66	241	22	22
300	12	245	337	38	31.8	431.8	400	410	12-25	12-22	12-26	483	445	460	125	102	4-11.5	77	292	22	24
350	14	277	368	45	31.8	476.3	460	470	12-29	16-22	16-26	533	505	520	125	102	4-11.5	77	325	22	24
400	16	308	400	51	33.3	539.8	515	525	16-29	16-26	16-30	597	565	580	210	165	4-22	86	380	27	27
450	18	342	422	51	38.1	577.9	565	585	16-32	20-26	20-30	635	615	640	210	165	4-22	105	428	27	27
500	20	374	479	64	41.3	635	620	650	20-32	20-26	20-33	699	670	715	210	165	4-22	130	474	27	32
600	24	459	562	70	50.8	749.3	725	770	20-35	20-30	20-36	813	780	840	210	165	4-22	152	575	36	36
700	28	520	624	72	55	—	840	840	—	24-30	24-36	—	895	910	300	254	8-18	165	674	—	—
750	30	565	650	72	55	914.4	900	900	<u>24-35</u> 4-1½"	24-33	24-36	984	965	970	300	254	8-18	167	726	—	—
800	32	591	672	72	55	—	950	950	—	24-33	24-39	—	1025	1025	300	254	8-18	190	771	—	—
900	36	610	768	77	75	1085.9	1050	1050	<u>28-41</u> 4-1½"	<u>24-33</u> 4-M30	<u>24-39</u> 4-M36	1168	1115	1125	300	254	8-18	207	839	—	—
1000	40	685	823	85	85	—	1160	1170	—	<u>24-36</u> 4-M33	<u>24-42</u> 4-M39	—	1230	1255	300	254	8-18	216	939	—	—
1050	42	785	858	85	85	1257.3	—	—	<u>32-41</u> 4-1½"	—	—	1346	—	—	300	254	8-18	256	997	—	—
1200	48	839	940	150	92	1422.4	1380	1390	<u>40-41</u> 4-1½"	<u>28-39</u> 4-M36	<u>28-48</u> 4-M45	1511	1455	1485	350	298	8-22	276	1125	—	—

✦ Please contact manufacturer if you want more flange standards.